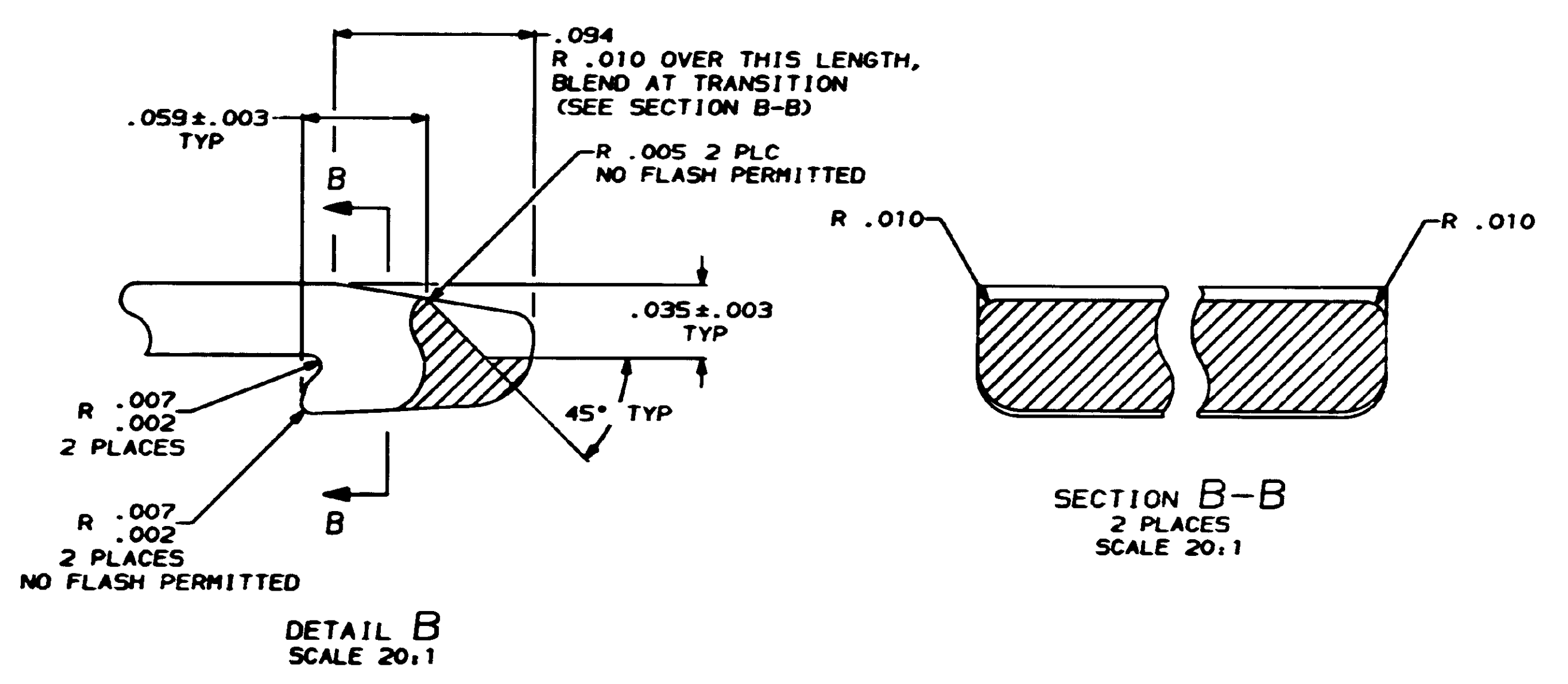
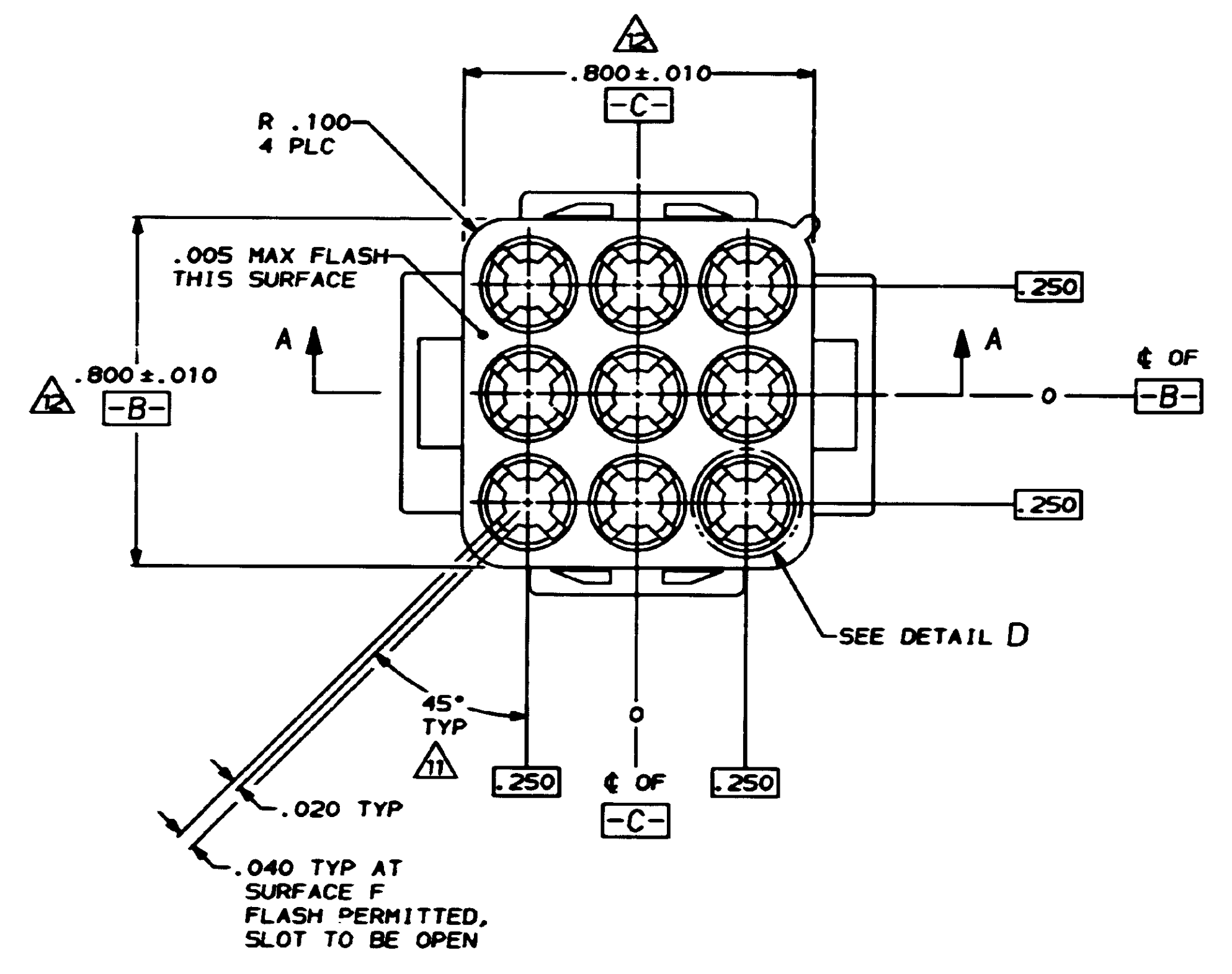
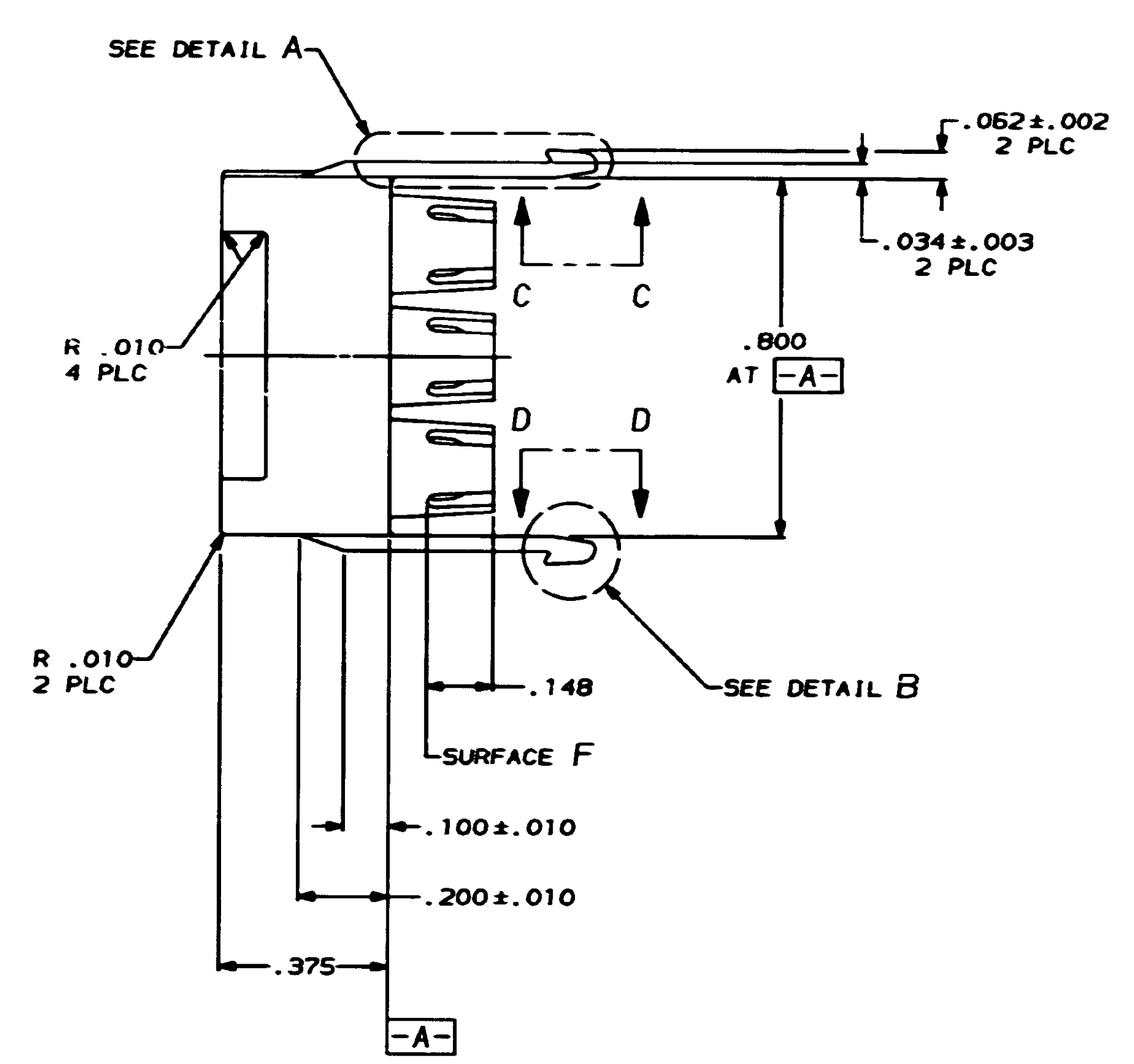
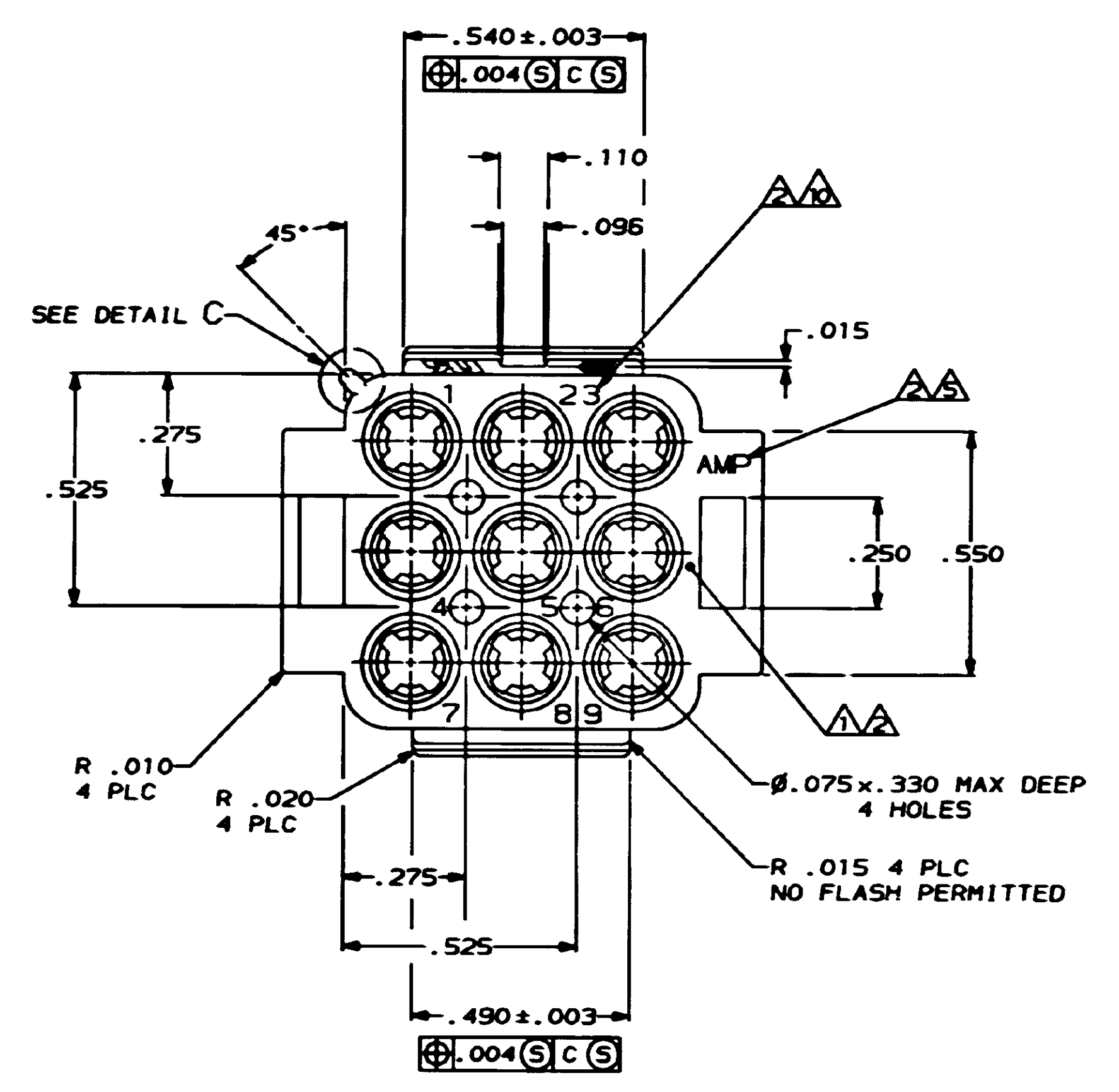
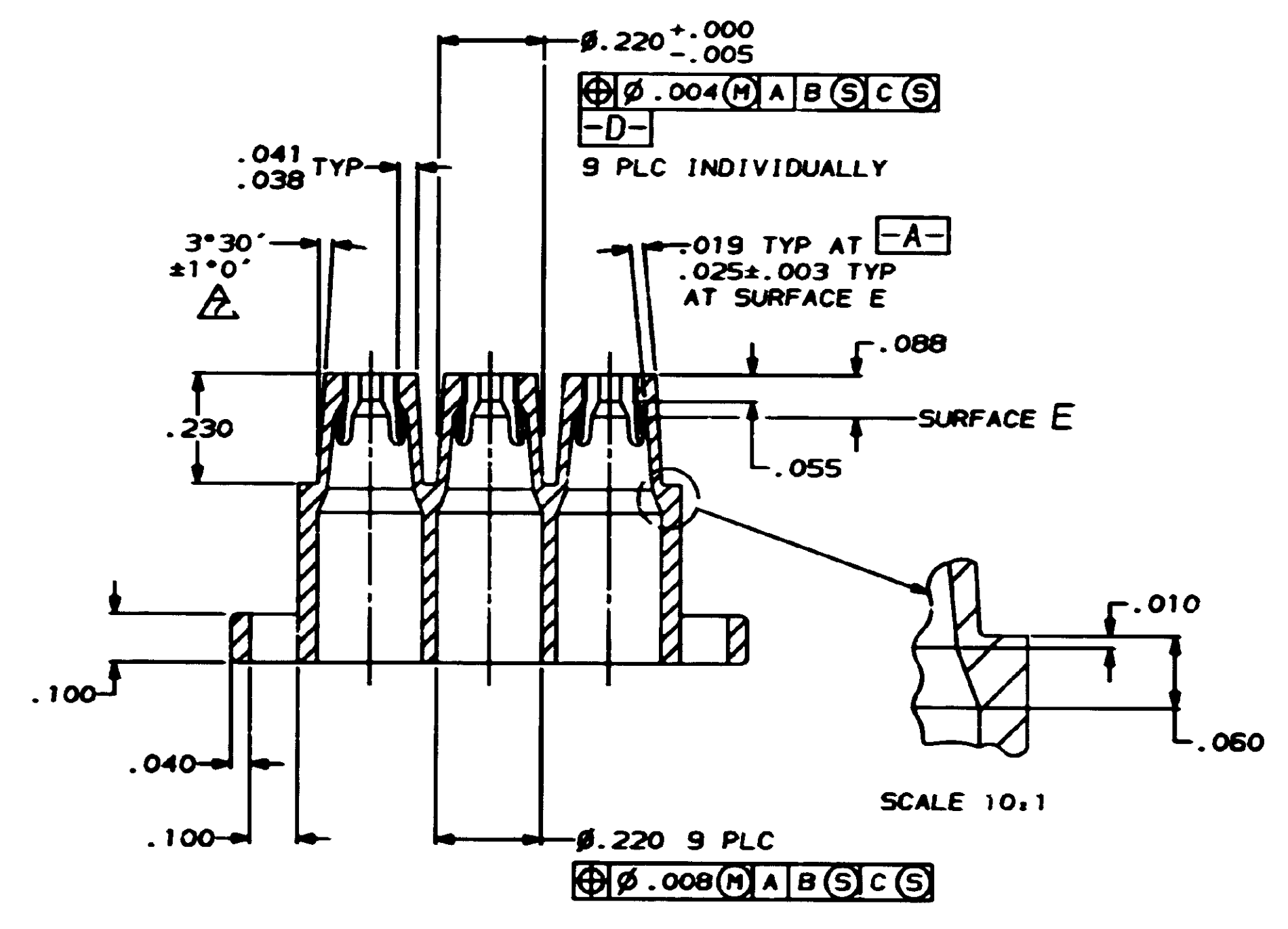
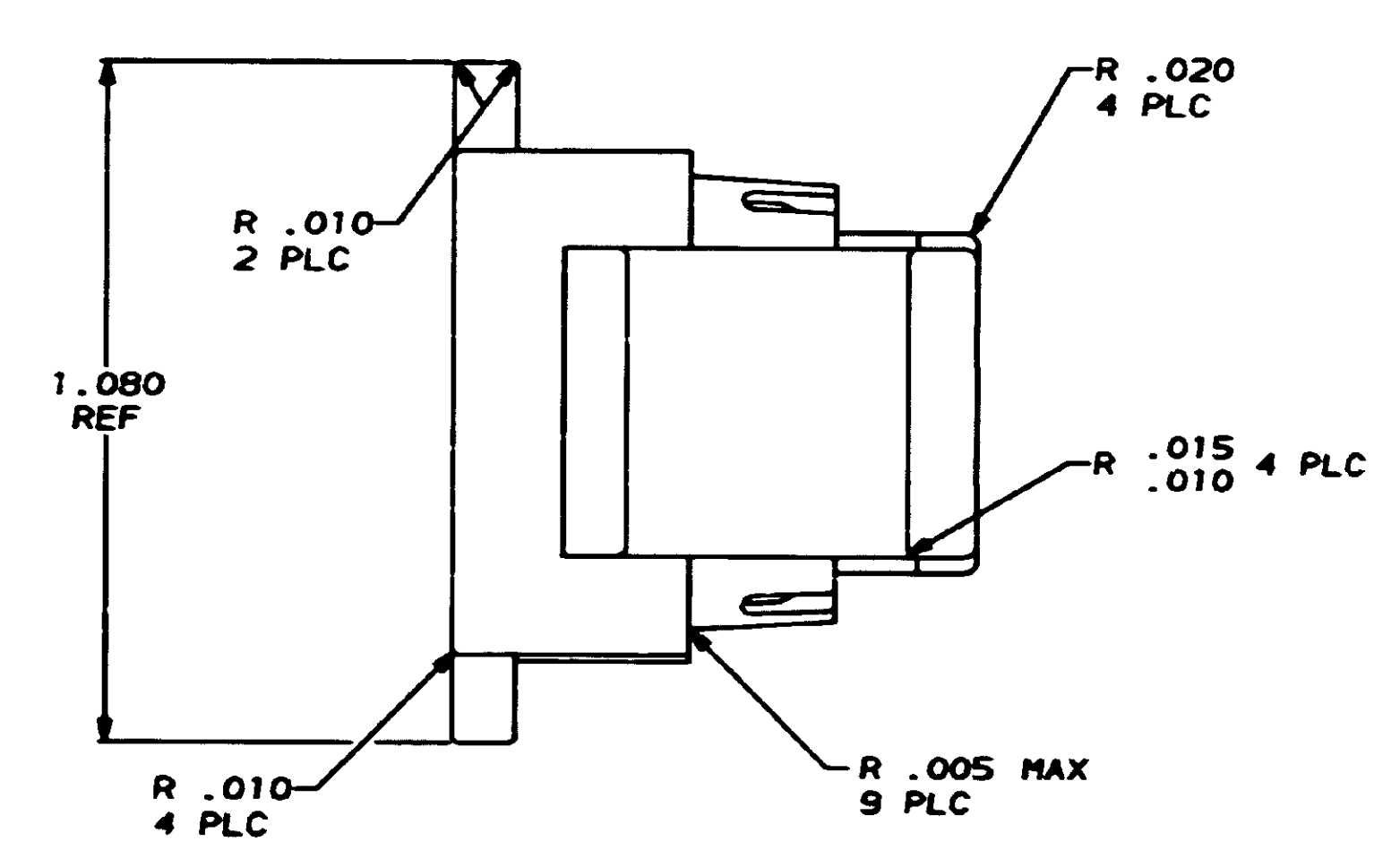


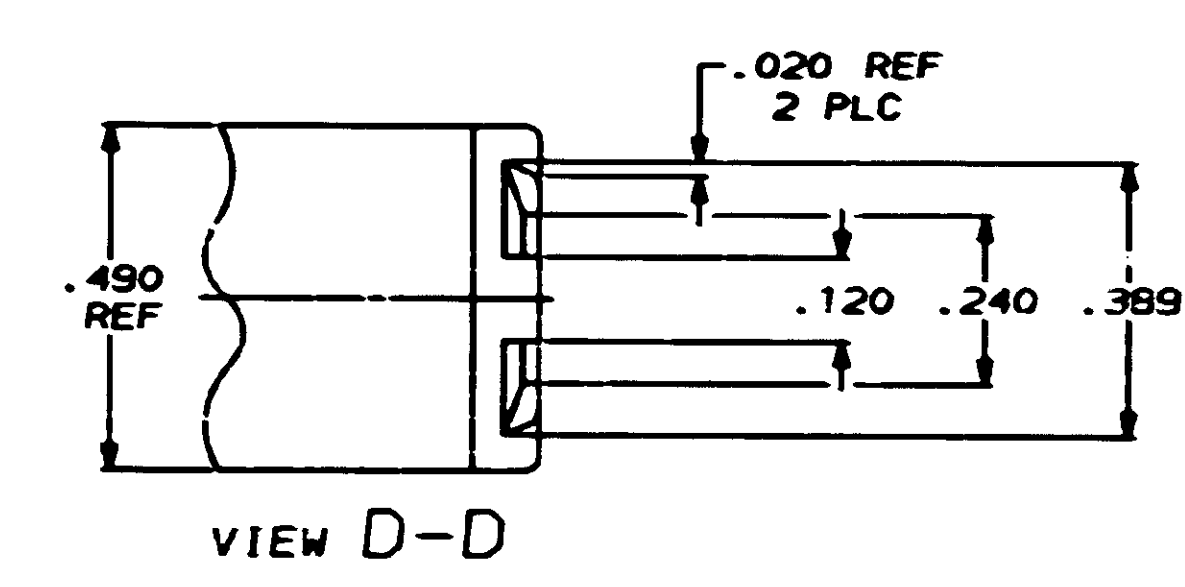
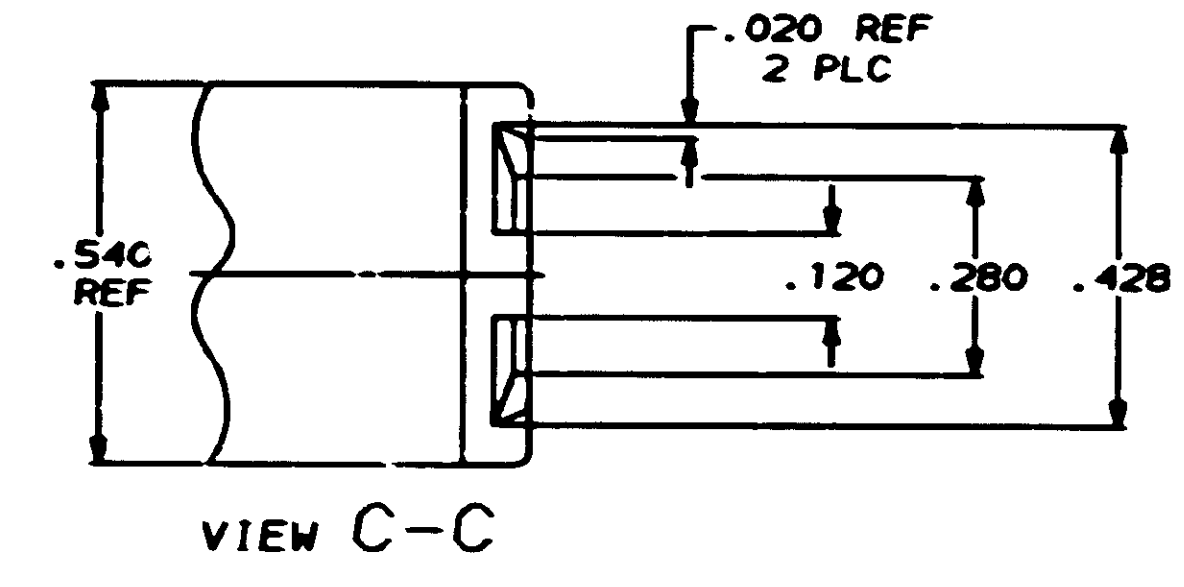
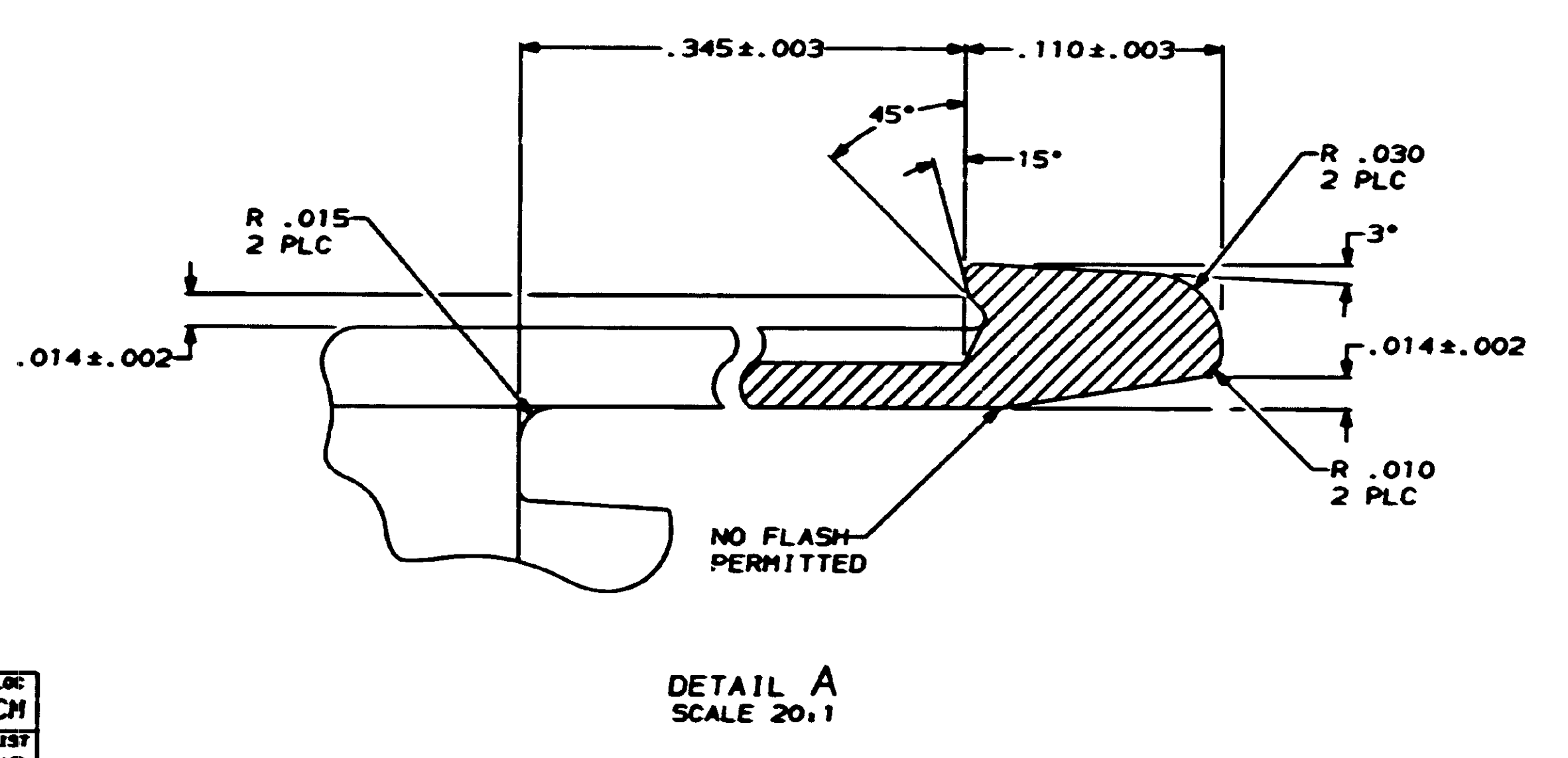
- △ LOCATE MOLD CAVITY IDENTIFICATION THIS SURFACE, .005 HIGH PAD PERMITTED.
- △ CHARACTERS .040 HIGH, RAISED .002-.005 WITH .010-.015 FLAT ON TOP UNLESS OTHERWISE SPECIFIED (REFERENCE).
- 3. PART MUST CONFORM TO AMP SPEC. 115-49001.
- △ MOLDING COMPOUND NYLON, TYPE 6/6, FLM RTD, LUB, NATURAL (BRICK RED), 702926-1.
- △ LOCATE AMP TRADEMARK THIS SURFACE.
- △ NOMINAL CONTROLLING DIMENSIONS WOULD CAUSE THIS DIAMETER TO BE .1895. THIS MAY BE EXCEEDED AS SHOWN IN DETAIL D.
- △ THIS ANGLE MUST BE HELD BETWEEN -A- AND SURFACE F.
- △ PART IS NOT TO BE MOISTURIZED.
- △ UNDERWRITERS RECOGNIZED COMPONENT MARK PER DRAWING 18838 AND CSA CERTIFICATION MARK PER DRAWING 18839 TO BE LOCATED ONCE EACH IN EITHER INDICATED AREA, APPROXIMATELY .090 HIGH, RAISED .002-.005 WITH .010 MIN FLAT ON TOP (REFERENCE).
- △ POSITION CIRCUIT IDENTIFICATION CHARACTERS ADJACENT TO THE INDICATED CAVITIES, PREFERABLY IN THE LOCATIONS SHOWN.
- △ COORDINATE DIMENSION APPLIES FROM CENTER OF ACTUAL FEATURE.
- △ DIMENSION IS AS MOLDED. ADDITIONAL GROWTH OF .015 INCH IS ALLOWED DUE TO SUBSEQUENT MOISTURE ABSORPTION.



SECTION B-B
2 PLACES
SCALE 20:1



SECTION A-A



770054-1
PART NUMBER

REV	DATE	BY	CHKD	APP'D	DESCRIPTION	ITEM NO
1	1-15-62	E. SALMON	H. TRILL		AMP	
2	1-15-62	H. TRILL				
3	1-15-62	H. TRILL				
4	1-15-62	H. TRILL				
5	1-15-62	H. TRILL				
6	1-15-62	H. TRILL				
7	1-15-62	H. TRILL				
8	1-15-62	H. TRILL				
9	1-15-62	H. TRILL				
10	1-15-62	H. TRILL				
11	1-15-62	H. TRILL				
12	1-15-62	H. TRILL				
13	1-15-62	H. TRILL				
14	1-15-62	H. TRILL				
15	1-15-62	H. TRILL				
16	1-15-62	H. TRILL				
17	1-15-62	H. TRILL				
18	1-15-62	H. TRILL				
19	1-15-62	H. TRILL				
20	1-15-62	H. TRILL				
21	1-15-62	H. TRILL				
22	1-15-62	H. TRILL				
23	1-15-62	H. TRILL				
24	1-15-62	H. TRILL				
25	1-15-62	H. TRILL				
26	1-15-62	H. TRILL				
27	1-15-62	H. TRILL				
28	1-15-62	H. TRILL				
29	1-15-62	H. TRILL				
30	1-15-62	H. TRILL				
31	1-15-62	H. TRILL				
32	1-15-62	H. TRILL				
33	1-15-62	H. TRILL				
34	1-15-62	H. TRILL				
35	1-15-62	H. TRILL				
36	1-15-62	H. TRILL				
37	1-15-62	H. TRILL				
38	1-15-62	H. TRILL				
39	1-15-62	H. TRILL				
40	1-15-62	H. TRILL				
41	1-15-62	H. TRILL				
42	1-15-62	H. TRILL				
43	1-15-62	H. TRILL				
44	1-15-62	H. TRILL				
45	1-15-62	H. TRILL				
46	1-15-62	H. TRILL				
47	1-15-62	H. TRILL				
48	1-15-62	H. TRILL				
49	1-15-62	H. TRILL				
50	1-15-62	H. TRILL				
51	1-15-62	H. TRILL				
52	1-15-62	H. TRILL				
53	1-15-62	H. TRILL				
54	1-15-62	H. TRILL				
55	1-15-62	H. TRILL				
56	1-15-62	H. TRILL				
57	1-15-62	H. TRILL				
58	1-15-62	H. TRILL				
59	1-15-62	H. TRILL				
60	1-15-62	H. TRILL				
61	1-15-62	H. TRILL				
62	1-15-62	H. TRILL				
63	1-15-62	H. TRILL				
64	1-15-62	H. TRILL				
65	1-15-62	H. TRILL				
66	1-15-62	H. TRILL				
67	1-15-62	H. TRILL				
68	1-15-62	H. TRILL				
69	1-15-62	H. TRILL				
70	1-15-62	H. TRILL				
71	1-15-62	H. TRILL				
72	1-15-62	H. TRILL				
73	1-15-62	H. TRILL				
74	1-15-62	H. TRILL				
75	1-15-62	H. TRILL				
76	1-15-62	H. TRILL				
77	1-15-62	H. TRILL				
78	1-15-62	H. TRILL				
79	1-15-62	H. TRILL				
80	1-15-62	H. TRILL				
81	1-15-62	H. TRILL				
82	1-15-62	H. TRILL				
83	1-15-62	H. TRILL				
84	1-15-62	H. TRILL				
85	1-15-62	H. TRILL				
86	1-15-62	H. TRILL				
87	1-15-62	H. TRILL				
88	1-15-62	H. TRILL				
89	1-15-62	H. TRILL				
90	1-15-62	H. TRILL				
91	1-15-62	H. TRILL				
92	1-15-62	H. TRILL				
93	1-15-62	H. TRILL				
94	1-15-62	H. TRILL				
95	1-15-62	H. TRILL				
96	1-15-62	H. TRILL				
97	1-15-62	H. TRILL				
98	1-15-62	H. TRILL				
99	1-15-62	H. TRILL				
100	1-15-62	H. TRILL				

AMP REAR 9 CKT. UNIVERSAL MATE-N-LOK II
SCALE 4:1
770054
SHEET 1 OF 1